



BASILIQUE NOTRE-DAME D'HÉLIOPOLIS
Restoration Project





Notre-Dame d'Héliopolis was built between 1910 and 1913 according to the plans of the French architect Alexandre Marcel.

Since then, it has been uniting its congregation in prayer and celebration.

As the Parish Council representing all the parishioners of the Basilica, we are committed to preserve it, and we pray to get all the help we need to complete this project.

We are forever proud and grateful to be part of this church and what it represents to our community.

Baron Édouard Empain built Heliopolis in the middle of the desert about fifteen kilometers from Cairo.

The focal point of the new city would be this Byzantine-style basilica, inspired by the Hagia Sophia in Constantinople.



All the expenses for its construction were personally covered by the Baron.

When he passed away in 1929, he had requested that his remains be laid to rest in the crypt of the Basilica of Heliopolis.

The Basilique is among the first buildings still surviving and forming the prestigious city of Heliopolis.

The **Restoration Project** is a response to the deterioration which started to prevail all over the exterior and the interior of the church.

FACTORS



AGE

The church was never restored before



WEATHER CONDITIONS

Damage caused by wind, rain and trapped rain water



UNAUTHENTIC REPAIRS

Incompatible paint and unauthentic materials used in the past



NEW SERVICES

Newly installed electronics, air condition and water system



HEAVY SCULPTURES

Masonry not capable to carry such weights causing cracks



We knew we needed to act fast when a **dangerous incident** occurred on **October 15th, 2021** at 5:00 am, the stone medallion attached to the **roof cross broke and fell to the ground**, causing damage to the cornice underneath it and endangering pedestrians. We knew then that it was time to repair and preserve our beloved church. We installed scaffolding and are now only using the main entrance on rare occasions to ensure the safety of our people.

Two weeks later, we invited experts to visit our church. They conducted a visual assessment of the exterior facades, the interior ground floor spaces, the mezzanine, a portion of the basement accessed through the spiral staircases, and the roofs.

We received a report highlighting all the damages and suggesting a **4 stage plan** for the restoration of the church.

WHAT HAS BEEN DONE SO FAR

CONSULTANCY WORK

by Maher Andraws A&P (Architects & Planners)

The studies, engineering reports, and critical laboratory tests for restoring and maintaining the Basilique Notre Dame of Heliopolis have been completed.

All the approvals and permits needed from government agencies have been issued.

The parish has commissioned the consulting office of **Maher Andraws A&P (Architects & Planners)** to provide the studies and tests, monitor and supervise all the stages of restoration, and coordinate with all the engineering disciplines and restoration experts to restore the Basilique to a state that befits its value. The consulting office also designed the external and internal lighting to show the Basilique with the splendour that befits it.

SCAFFOLDING

by BESIX Group



The scaffolding for the entire duration of our project has been generously provided by **BESIX**.

FUNDRAISING IN BELGIUM

by *Les Amis de la Basilique d'Héliopolis*

Mr. François Cornet d'Elzius, Belgian Ambassador to Cairo, in collaboration with Mrs. Countess Amélie d'Arschot, descendant of Boghos Nubar Pasha, founded in Belgium a fund called *Les Amis de la Basilique d'Héliopolis*, managed by the **King Baudouin Foundation**.

Thanks to their commitment and support, the Basilica Parish Council has created a specific website for the fund, providing a dedicated platform. The fundraising work has already started through gala dinners and other events.

<https://amisdelabasilique.com>

**RESTORATION PLAN
& BREAKDOWN OF COSTS**

STAGE 1 : CENTRAL PART & DOME

Stage 1 includes the central part of the basilica from the outside, that is, from top to bottom:

- The 32-meter-high central dome
- Northern façade
- Southern façade
- Main windows
- Side gates

THE WORK TO BE CARRIED OUT

- **Structural reinforcement and insulation** for the central dome
- Meticulously restoring the **carvings and decorations**
- Repairing the **stained glass** and replacing the damaged ones
- Replacing and renewing the **exterior layers of paint**
- Meticulously restoring the **wooden gates**
- Changing the **flooring and stairs** for the side entrances

IT IS ESTIMATED TO COST **\$150,000 USD** AND TAKE **5 MONTHS**

STAGE 2 : FOUR TOWERS

Stage 2 includes four 22-meter-high towers from the outside

THE WORK TO BE CARRIED OUT

- **Structural reinforcement and insulation** for the four domes
- Meticulously restoring **carvings and decorations**
- Repairing the **stained glass** and replacing the damaged ones
- Replacing and renewing the **exterior layers of paint**

IT IS ESTIMATED TO COST **\$115,000 USD** AND TAKE **5 MONTHS**

STAGE 3 : BACK & APSE DOMES

Stage 3 includes the back part of the basilica and the apse dome

THE WORK TO BE CARRIED OUT

- **Structural reinforcement and insulation** for the apse dome
- Meticulously restoring the **carvings and decorations**
- Repairing the **stained glass** and replacing the damaged ones
- Replacing and renewing the **exterior layers of paint**
- Changing the **flooring and stairs** for the back entrances
- Replacing and renewing the **back gates**
- Meticulously restoring windows
- Sanitary works

IT IS ESTIMATED TO COST **\$130,000 USD** AND TAKE **4 MONTHS**

STAGE 4 : FAÇADE & MAIN ENTRANCE

Stage 4 includes the main entrance to the basilica from the outside.

THE WORK TO BE CARRIED OUT

- **Structural reinforcement and insulation** for the organ
- Meticulously restoring the **carvings and decorations**
- Repairing the **stained glass** and replacing the damaged ones
- Replacing and renewing the **exterior layers of paint**
- Replacing the **wooden main gates**
- Changing and replacing the **flooring** for the entrance
- Restoring the **external fence**
- Meticulously restoring windows

IT IS ESTIMATED TO COST **\$120,000 USD** AND TAKE **4 MONTHS**

INFRASTRUCTURE RENOVATION THROUGHOUT THE PROJECT

- Electromechanical and sanitary works
- External and internal lighting systems
- Replacing and renewing the medium and low current distribution network
- Emergency alarm systems
- Circuit television systems
- Maintenance and development of central air conditioning and ventilation systems
- Replacing and renewing the water network and sewage systems
- Flood drainage networks
- Detection, alarm, and firefighting systems

IT IS ESTIMATED TO COST **\$180,000 USD**

Total Estimated Duration: **18 months**

BREAKDOWN OF COSTS

Ite	Estimated Cost	
Internal & External Restoration Works		
1	Installation of exterior architectural items	\$26,200
2	Restoration of exterior architectural items	\$43,600
3	Replacement of damaged exterior architectural items	\$31,600
4	Restoration of stained glass windows above the main entrances	\$7,000
5	Restoration of the 5 external wooden entrance doors	\$5,300
6	Structural reinforcement of central dome	\$6,700
7	Restoration of marble floors, staircases & entrances	\$29,800
8	Replacement of damaged floor marbles, staircases & entrances	\$90,300
9	Restoration, cleaning & maintenance of the 4 stained glass icons	\$700
10	Restoration of cracks & internal joints of the church	\$6,400
11	Restoration of gates & iron fence	\$6,200
SUBTOTAL		\$253,80
External Insulation Works		
12	External insulation works (Roofs, domes, towers)	\$39,800
SUBTOTAL		\$39,800
Plaster & Artificial Stone Whitening (External façades, domes)		
13	Replacement of the old plaster	\$117,10
14	Artificial stone whitening similar to archaeological original	\$104,10
SUBTOTAL		\$221,20
Electromechanical Works		
15	Sanitary Works	\$11,300
16	Electricity Works	\$64,700
17	Lighting Works	\$73,100
18	Maintenance of central air conditioning equipment	\$31,000
SUBTOTAL		\$180,10
GRAND TOTAL		\$694,90

HOW TO HELP

YOU CAN CONTRIBUTE WITH A MONTHLY OR A ONE-TIME DONATION

CRÉDIT AGRICOLE EGYPT

- **EGP** IBAN# EG89 0036 0001 0001 1018 1802 4133 4
- **USD** IBAN# EG49 0036 0001 0001 1018 4000 4938 9
- **EUR** IBAN# EG24 0036 0001 0001 1019 7800 2257 0

 Use your camera to copy the IBAN number



EGP



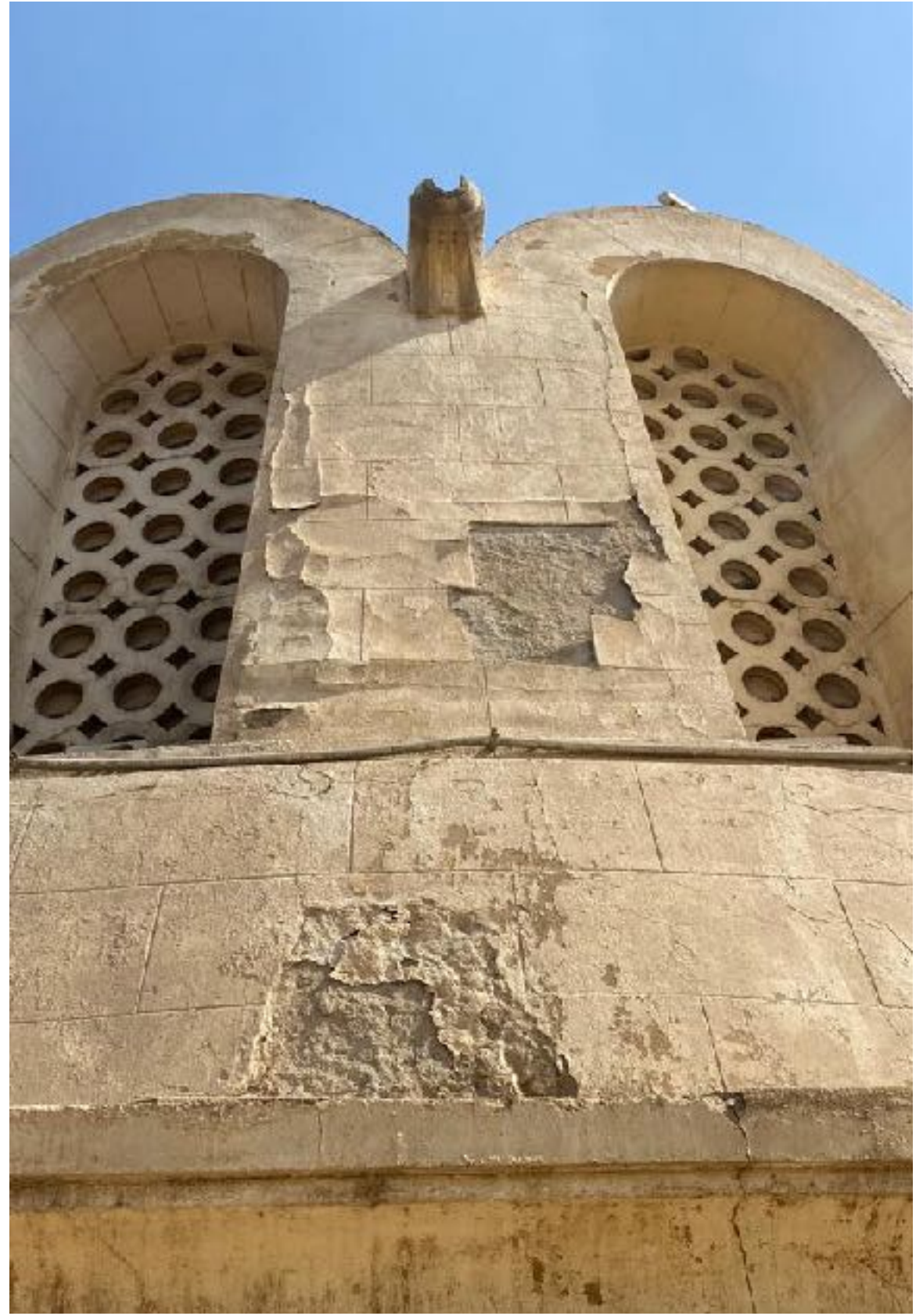
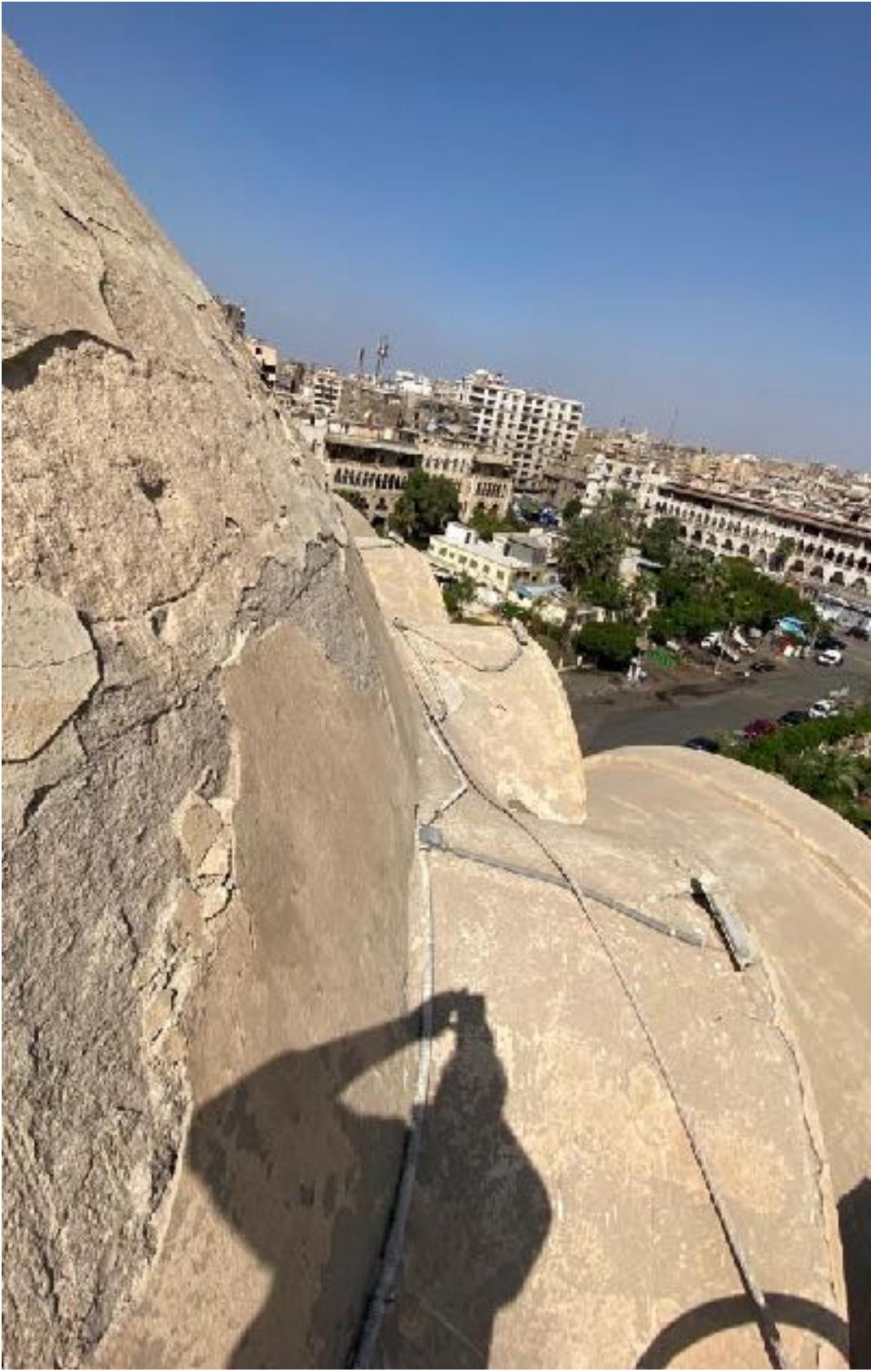
USD

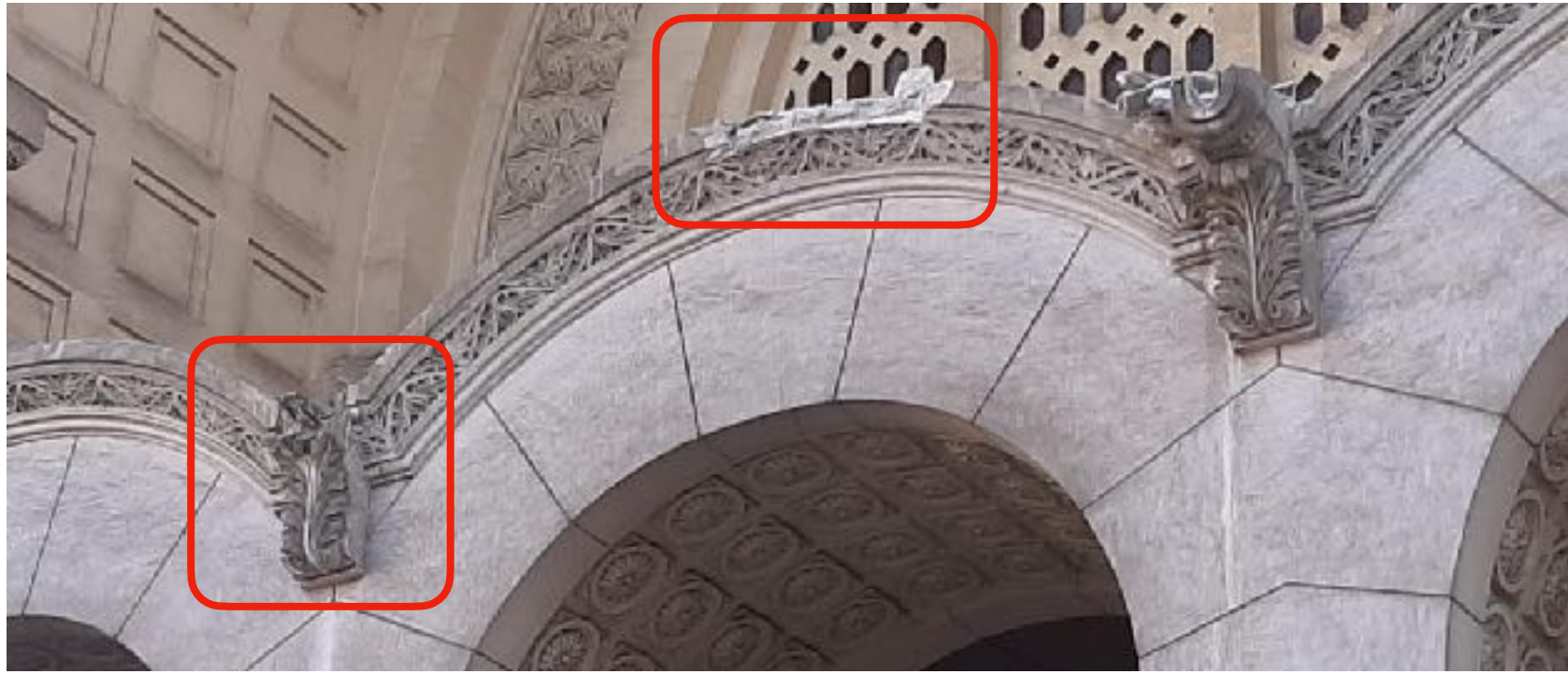


EUR

ASSESSMENT IMAGES







**THANK YOU FOR TAKING THE TIME TO READ OUR PRESENTATION
YOUR CONTRIBUTION WOULD BE GREATLY APPRECIATED**

For more information, please contact: Parish Council Member Achraf Fawzi
Phone: 02 2415 2769 or 02 2415 9037 | E-mail: info@labasilique.org | www.labasilique.org

